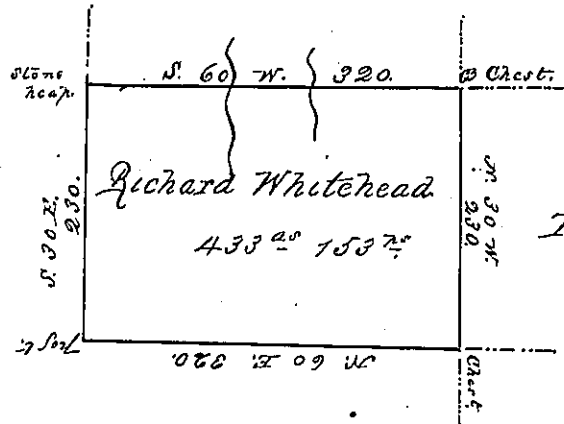


Charles London.

Patton & Co.



Tho: Maston.

Elizabeth Hootman

Situate in Huntingdon or Mifflin County Franklin township ~~County~~ on the waters of ~~the~~ big bald Eagle containing four hundred and thirty three acres one hundred and fifty three perches and the usual allowance

Surveyed 16 June 1794 by virtue of a warrant dated 13th March 1794 -

Nathl Broadhead Esq. S. J.

John Canan S. D.

IN TESTIMONY that the above is a copy of the original remaining on file in the Department of Internal Affairs of Pennsylvania, made conformably to an Act of Assembly approved the 16th day of February, 1833, I have hereunto set my Hand and caused the Seal of said Department to be affixed at Harrisburg, this

Fifteenth day of July 1876

Wm McCandless

Secretary of Internal Affairs